



ME & WE  
mwpcdtools.com

ME&WE  
DIAMOND GRINDING WHEEL  
Super Wear-Resistance

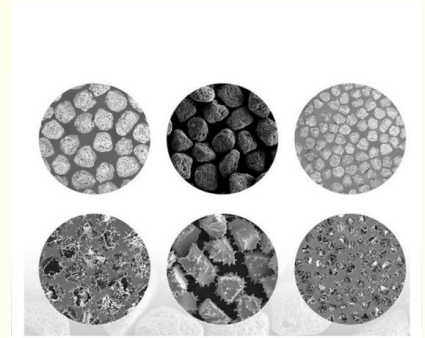
ME&WE  
PDC DRILL BIT  
Longer Drilling Footage

## Nickel Coated CBN Synthetic Diamond Dust Cubic Boron Nitride Abrasive 270/325 Mesh

Our Product Introduction

### Basic Information

- Place of Origin: China
- Model Number: 60/80 ~ 325/400
- Minimum Order Quantity: 100CTS
- Price: Negotiable
- Packaging Details: Bag, Bottle, Carton
- Delivery Time: 5-8 workdays
- Payment Terms: T/T, Western Union, L/C
- Supply Ability: 10000000CTS Per Month



### Product Specification

- Synthetic Diamond Powder: CBN Single Crystal
- Coating: Nickel, Ni
- Characteristics: Toughness, Resistance, Thermal Stability
- Application: Black Metals And The Related Alloy
- Package: Bag, Bottle
- Transport: By Air, By Sea
- Highlight: **Nickel Coated synthetic diamond dust,  
CBN synthetic diamond dust,  
cubic boron nitride abrasive 270/325 mesh**

for more products please visit us on [mwpcdtools.com](http://mwpcdtools.com)

## Product Description

### Nickel Coated CBN Single Crystal, NI Coating Cubic Boron Nitride Abrasives, Synthetic Diamond Powder

#### 1. Description:

Nickel Coated CBN products are used for resin bond system, the coating ensuring good retention in the bond and long life. The basic level of coating is 60% (weight), but it can be changed according to user's needs.

#### 2. Specifications:

U.S. Mesh	60/80	80/100	100/120	120/140	140/170	170/200	200/230	230/270	270/325	325/400
Black	√	√	√	√	√	√	√	√	√	√
Amber	√	√	√	√	√	√	√	√	√	√

Remark: Other sizes can be supplies on request.

#### 3. Application:

Used for resin bond system.

#### 4. Advantage:

High hardness;  
High thermal stability;  
High chemical inertness.



ME & WE



18837137981



[zyxelina@sina.com](mailto:zyxelina@sina.com)



[mwpcdtools.com](http://mwpcdtools.com)