



ME & WE
mwpcdtools.com

ME&WE
DIAMOND GRINDING WHEEL
Super Wear-Resistance+



ME&WE
PDC DRILL BIT
Longer Drilling Footage+

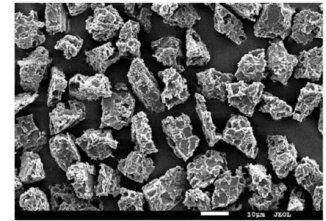


2um 4um Synthetic Diamond Powder Quasi Polycrystalline Diamond Powder

Our Product Introduction

Basic Information

- Place of Origin: China
- Model Number: 2-4 ~ 36-54
- Minimum Order Quantity: 100CTS
- Price: Negotiable
- Packaging Details: Bag, Bottle, Carton
- Delivery Time: 5-8 workdays
- Payment Terms: T/T, Western Union, L/C
- Supply Ability: 10000000CTS Per Month



Product Specification

- Synthetic Diamond Powder: Polycrystalline-Like Diamond Powder
- Sizes: 2-4 ~ 36-54
- Application: Grinding, Polishing, Cutting
- Package: Bag, Bottle
- Transport: By Air, By Sea
- Highlight: **2um Synthetic Diamond Powder ,
4um Synthetic Diamond Powder ,
Quasi polycrystalline diamond powder**

for more products please visit us on mwpcdtools.com

Product Description

Polycrystalline-Like Diamond Powder, Quasi Polycrystalline Diamond Powder, Synthetic Diamond Powder

1. Description:

Strong cutting force: There are a large number of sharp cutting edges on the surface of particles, and the cutting force can reach 2-4 times that of single crystal diamond powder.

2. Specifications:

Grain Size	2-4	3-6	4-8	5-10	6-12	8-16	10-20	15-25	20-30	22-36	30-40	36-54
(μm)	√	√	√	√	√	√	√	√	√	√	√	√

Remark: For the conventional granularity in the table, other granularity products can be provided according to customer's requirements.

3. Application:

Precision lapping and polishing of SiC and Al₂O₃ wafers;

Grinding and polishing of ceramic materials;

Precision lapping and polishing of stainless steel, aluminium alloy and other metal materials.

4. Advantage:

Strong cutting force: There are a large number of sharp cutting edges on the surface of particles, and the cutting force can reach 2-4 times that of single crystal diamond powder.

High polishing accuracy: The cutting edge of single crystal diamond powder is large and hard, which is prone to deep scratches. The cutting edge of polycrystal-like diamond powder is small and its hardness is low. The Ra value of workpiece surface after polishing decreases significantly.

Strong grip strength: rough surface of particles and stronger bonding with binder can significantly improve grip strength of abrasives in various diamond products and improve service life.



ME & WE



18837137981



zyxelina@sina.com



mwpcdtools.com