



ME & WE
mwpcdtools.com

ME&WE
DIAMOND GRINDING WHEEL
Super Wear-Resistance



ME&WE
PDC DRILL BIT
Longer Drilling Footage

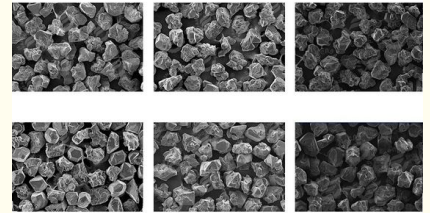


400/500mesh Industrial Diamond Powder High Sharpness Resin Bond Diamond Powder

Our Product Introduction

Basic Information

- Place of Origin: China
- Model Number: 60/70 ~ 400/500
- Minimum Order Quantity: 100CTS
- Price: Negotiable
- Packaging Details: Bag, Bottle, Carton
- Delivery Time: 5-8 workdays
- Payment Terms: T/T, Western Union, L/C
- Supply Ability: 10000000CTS Per Month



Product Specification

- Synthetic Diamond Powder: RVD
- Sizes: 60/70 ~ 400/500
- Characteristics: Sharpness, Efficiency
- Application: Grinding, Polishing, Cutting
- Package: Bag, Bottle
- Transport: By Air, By Sea
- Highlight: 400/500mesh industrial diamond powder,
Cutting industrial diamond powder,
high Sharpness resin bond diamond powder

for more products please visit us on mwpcdtools.com

Product Description

Resin Bond Diamond, Synthetic Diamond Powder

1. Description:

Resin Bond Diamond are polycrystalline diamond graine, mainly used in resin bond diamond grinding wheels. Our boron doped technology largely improve bond strength, accordingly, elevate bond retention capabilities to crystal. Polycrystalline diamond graine is composed of sub-crystals with mosaic structure that provides the graine with irregular shape and rough surface. Polycrystalline diamond can keep consistency of self-sharpening and sharp cutting edges.

2. Specifications:

| | | | | | | |
|-----------|---------|---------|---------|---------|---------|---------|
| U.S. Mesh | 60/70 | 70/80 | 80/100 | 100/120 | 120/140 | 140/170 |
| | 170/200 | 200/230 | 230/270 | 270/325 | 325/400 | 400/500 |

Remark: Other sizes can be supplies on request.

3. Application:

Low load grinding and cutting glass, low load round edge grinding of quartz and carbide, semi-finishing of flat glass, chamfering of dental materials, grinding beveled edges of glass furniture and mirrors, etc.

4. Advantage:

High Efficiency.

Perfect surface.

Long life.

Consistent frianility prevents workpiece from scratch or burn, largely decrease defective rate.

Allication for Resin Bond Diamond.

Tungsten Carbide: Cutting and Milling Tools, dies and so on.

Ceramics: Silicon Nitride, Porcelain, Aluminum Oxide, Silicon Carbide, glass and so on.



ME & WE



18837137981



zyxelina@sina.com



mwpcdtools.com