



**ME & WE**  
mwpcdtools.com

**ME&WE  
DIAMOND GRINDING WHEEL**  
Super Wear-Resistance+



**ME&WE  
PDC DRILL BIT**  
Longer Drilling Footage+

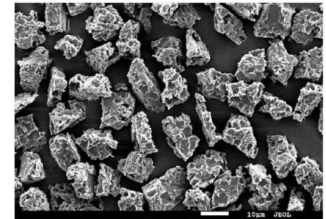


## 2um 4um Synthetic Diamond Powder Quasi Polycrystalline Diamond Powder

### Our Product Introduction

#### Basic Information

- Place of Origin: China
- Model Number: 2-4 ~ 36-54
- Minimum Order Quantity: 100CTS
- Price: Negotiable
- Packaging Details: Bag, Bottle, Carton
- Delivery Time: 5-8 workdays
- Payment Terms: T/T, Western Union, L/C
- Supply Ability: 10000000CTS Per Month



#### Product Specification

- Synthetic Diamond Powder: Polycrystalline-Like Diamond Powder
- Sizes: 2-4 ~ 36-54
- Application: Grinding, Polishing, Cutting
- Package: Bag, Bottle
- Transport: By Air, By Sea
- Highlight: **2um Synthetic Diamond Powder ,  
4um Synthetic Diamond Powder ,  
Quasi polycrystalline diamond powder**

for more products please visit us on [mwpcdtools.com](http://mwpcdtools.com)

## Product Description

### Polycrystalline-Like Diamond Powder, Quasi Polycrystalline Diamond Powder, Synthetic Diamond Powder

#### 1. Description:

Strong cutting force: There are a large number of sharp cutting edges on the surface of particles, and the cutting force can reach 2-4 times that of single crystal diamond powder.

#### 2. Specifications:

Grain Size	2-4	3-6	4-8	5-10	6-12	8-16	10-20	15-25	20-30	22-36	30-40	36-54
( $\mu\text{m}$ )	√	√	√	√	√	√	√	√	√	√	√	√

Remark: For the conventional granularity in the table, other granularity products can be provided according to customer's requirements.

#### 3. Application:

Precision lapping and polishing of SiC and Al<sub>2</sub>O<sub>3</sub> wafers;

Grinding and polishing of ceramic materials;

Precision lapping and polishing of stainless steel, aluminium alloy and other metal materials.

#### 4. Advantage:

Strong cutting force: There are a large number of sharp cutting edges on the surface of particles, and the cutting force can reach 2-4 times that of single crystal diamond powder.

High polishing accuracy: The cutting edge of single crystal diamond powder is large and hard, which is prone to deep scratches. The cutting edge of polycrystal-like diamond powder is small and its hardness is low. The Ra value of workpiece surface after polishing decreases significantly.

Strong grip strength: rough surface of particles and stronger bonding with binder can significantly improve grip strength of abrasives in various diamond products and improve service life.



ME & WE



18837137981



zyxelina@sina.com



[mwpcdtools.com](http://mwpcdtools.com)